



GENERAL INSTRUCTION GUIDELINES

READ THIS FIRST:

- Read these instructions fully prior to beginning work. Verify all parts listed below are in the kit packaging, and all tools, equipment, skills and methods are on hand to safely complete the installation.
- Read the attached GENERAL INSTALLATION NOTES prior to beginning any work.
- Installation of these components should be performed by experienced and qualified mechanics, using safe and correct tools and equipment. Northwoods recommends this installation be performed by a qualified, certified automotive shop.
- Use safe methods in all work operations. Support the vehicle safely as required on a lift or hoist, or certified jack stands.

GENERAL INSTALLATION NOTES

- Installation shall be performed by qualified, experienced mechanics capable of performing this type of work. Northwoods recommends the work be performed in qualified ASE certified shops.
- Use only quality, certified tools and equipment appropriate for the job.
- Vehicle should only be supported by certified hoists, lifts, or jackstands of adequate capacity.
- Use only certified, dedicated spring compressors to compress and assemble springs. Northwoods recommends springs only be assembled and installed by qualified auto repair shops, using quality spring compression tools.
- Actual lift heights will vary by vehicle due to vehicle accessories, weights, loading, wear, initial ride height, and other factors.
- Upon completion of installation of springs or other suspensions and steering components, vehicles should be immediately aligned at a qualified shop.
- Modification to vehicle ride height requires re-alignment of headlights.
- Full inspection of all components installed should be checked after 300 miles of driving, including torque of all fasteners.
- Modified vehicles will handle and perform differently from stock vehicles, and the modified vehicle characteristics should be considered for driving safety. Modified vehicles may have affects to vehicle steering and response, and increased braking distances due to increased vehicle weight or larger tires.
- Modified vehicles may exhibit increased wear to suspension and other components, as well as an increase in vibration due to changes in component alignment and operating angles.
- Northwoods Performance Warranty, Return, and Replacement policies can be found on-line at northwoodsperformance.com, RESOURCES tab.

FRONT LIFT SPACER INSTALLATION INSTRUCTIONS

2003 – 2011 Ford Crown Victoria, Mercury Marquis

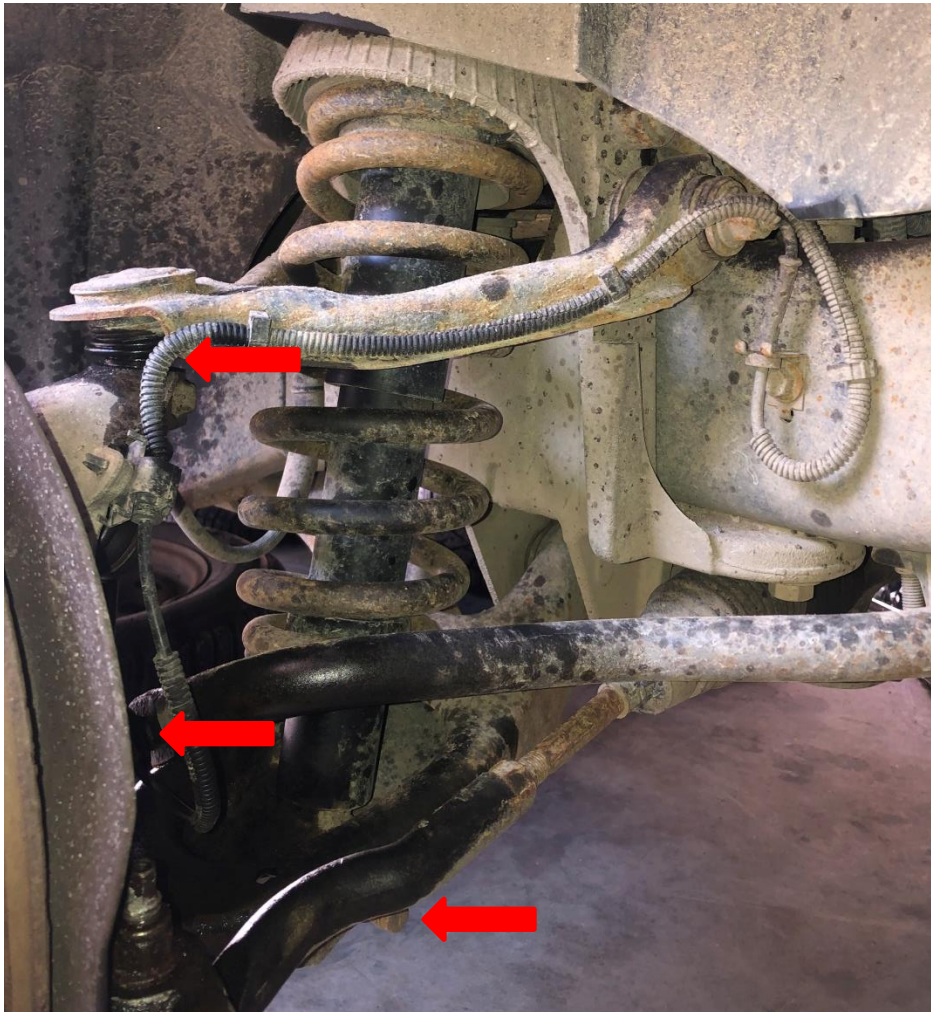
Installation time: 2-3 hours

FRONT LIFT KIT MATERIAL LIST

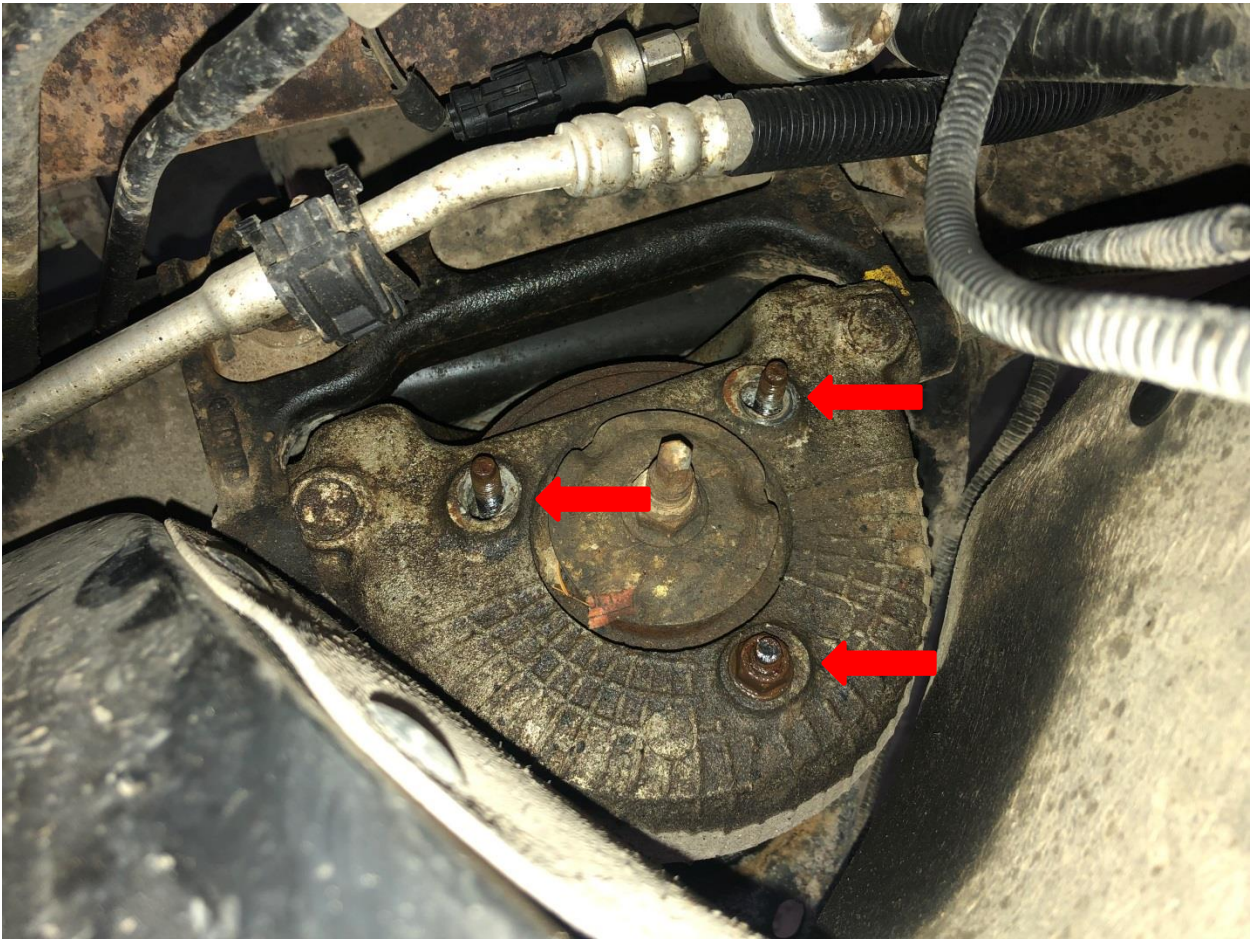
- Front Lift Spacers, with hardware 2
- Nut, 8mm 12
- Washer, 8mm 12

FRONT LIFT SPACER INSTALLATION

1. Remove the upper ball joint stud from the spindle—raise the upper control arm up for clearance. Support the spindle and hub with a jack stand as required.
2. Remove the lower sway bar link bolt.
3. Remove the lower coil retaining bolt from the lower control arm.



4. Remove the 3 upper coil stud nuts from inside the engine bay. Do not remove the top center coil spring retaining nut. Remove the coil assembly.



5. Cut the three top studs on each coil assembly to 1" length.
6. Install the lift spacers on top of the coil with the provided hardware. Recommend use of blue Loctite on the nuts.
7. Reinstall the coil in reverse order of assembly.
8. Complete the spacer installation on the other side of the vehicle.
9. Reinstall the sway bar link.

REAR LIFT SPRING AND SHOCK INSTALLATION

Installation time 2-3 hours.

REAR LIFT MATERIAL LIST

- Rear coil springs 2
- Rear Pro Comp shocks with hardware 2
- Rear shock bushings, lower mount spacers 4

REAR SPRING AND SHOCK INSTALLATION

1. Support the rear axle with a floor jack.
2. Remove both rear shock absorbers.
3. Remove the lower bolt from one side of the sway bar.
4. Remove the bolt from one side of the Watts link.
5. Lower the axle. Note: it may be necessary to loosen the trailing arm bolts to allow the rubber bushings to rotate.
6. Note the position of the lower coil spring end position. Remove the springs.
7. Install the Northwoods springs with the lower end coil in the same position.
8. Install the Watts link and sway bar. Tighten all nuts and bolts.
9. Install the new shock absorbers. If required, install one bushing on either side of the lower shock eyelet and install the lower bolt.